

AFINITI  CA

PROFESSIONAL SOLUTIONS

INSTANT ADHESIVES



INDEX

- 2** AFINITICA Technologies
- 3** Rapid Assembly
- 4** AF Series
- 6** Zapit & RTA
- 7** H₂R
- 8** The Odourless Technology
- 9** BEMO Series
- 10** BX & BXY Series
- 11** Fury
- 12** 3D Fix
- 13** The 2-Component (2K) Technology
- 14** Adhesive Welding & Adhesive Welding Ultra
- 15** Adhesive Welding Metal & Adhesive Welding Metal+
- 16** Super Repair
- 17** Super Flex
- 18** The Light curing Technology
- 19** Light Lock N° 1
- 20** Accessories
- 21** Summary Tables
- 24** Monomers

AFINITICA Technologies

We are the first company with a specific focus on instant adhesives. Our team comprises an eclectic mix of talents with a shared passion to grow business and create new possibilities in the area of cyanoacrylate adhesives.

Our adhesives are designed for the consumer, professional, industrial, biomedical and cosmetic markets. Our products open up new applications and new opportunities to improve efficiency, performance and user experience.

"Simply put - we wish to transform the profile of the materials we are passionate about from the status of simple superglues to the adhesive of choice for performance, sustainability and convenience." Ciaran McArdle - CTO AFINITICA.

We specialise in cyanoacrylate technology development and welcome queries on product customisation.



RAPID ASSEMBLY

INSTANT ASSEMBLY ADHESIVE

Repositionable and easy to use. The perfect adhesive for assembly, DIY and repair.



PROPERTIES

- Bonds in 30 seconds.
- High initial tack and final bonding strength.
- Open time up to 2 hours.
- Allows repositioning of parts.
- Can be used for large surfaces.
- Bonds a large range of materials: porous and non-porous (except polyolefins).
- Gel consistency suitable for applications in any orientation.
- Flexible.



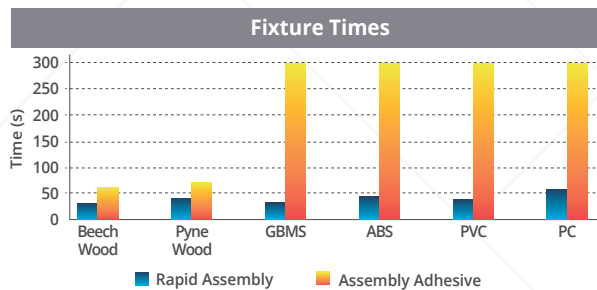
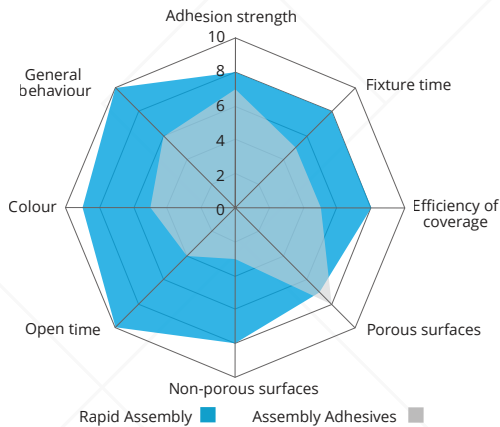
Instant adhesion



Repositionable



Gel consistency



BASE	Ethyl Cyanoacrylate
VISCOSITY	Thixotropic Gel
COLOUR	Transparent
FIXTURE TIME	30 seconds
FINAL STRENGTH (24 h)	Mild Steel 80-140 Kg/cm ² Beech Wood 100-120 Kg/cm ² (SF)
TEMPERATURE RANGE	-20 °C - +80 °C
AVAILABLE FORMATS	15 g (aluminium tube), 30-100 g (plastic tube), 500 g (bottle), 20 kg (bulk)
ACCESSORIES	Active Spray, Plastic Primer

(SF) Substrate failure

AF SERIES

INSTANT ADHESIVES

High quality instant adhesives for consumer and professional use.



PROPERTIES

- Instant adhesion.
- Extremely high adhesion strength.
- Bonds a large range of materials, including porous substrates (except polyolefins).
- Transparent and easy to use.
- Wild range of viscosities (see tables in pages 4 & 5).
- High quality bottle for a long shelf life.
- AF04 certified by NSF. Others can be certified.



Multi-material



High strength



Instant adhesion



NSF International



Transparent

AF PRODUCTS

The AF products are a series of ethyl cyanoacrylate formulations for the general assembly of close-fitting parts. These products are characterised by high quality, strength and speed.

Additionally, these products have been formulated to bond porous substrates.



	AF 00	AF 02	AF 111	AF 150
BASE	Ethyl Cyanoacrylate	Ethyl Cyanoacrylate	Ethyl Cyanoacrylate	Ethyl Cyanoacrylate
VISCOSITY	Low (1,8-5 cP)	Low (8-25 cP)	Low (25-45 cP)	Medium (60-100 cP)
COLOUR	Transparent	Transparent	Transparent	Transparent
FIXTURE TIME	5 seconds	5 seconds	5 seconds	5 seconds
FINAL STRENGTH (24 h)	Beech Wood 110-140 Kg/cm ² (SF) Mild Steel 170-200 Kg/cm ²	Beech Wood 130-150 Kg/cm ² (SF) Mild Steel 170-200 Kg/cm ²	Beech Wood 110-150 Kg/cm ² (SF) Mild Steel 150-160 Kg/cm ²	Beech Wood 140-160 Kg/cm ² (SF) Mild Steel 110-140 Kg/cm ²
TEMPERATURE RANGE	-20°C - +80°C	-20°C - +80°C	-20°C - +80°C	-20°C - +80°C
AVAILABLE FORMATS	20 g, 50 g, 500 g, 20 kg	20 g, 50 g, 500 g, 20 kg	20 g, 50 g, 500 g, 20 kg	20 g, 50 g, 500 g, 20 kg
ACCESSORIES	Active Spray, Plastic Primer, precision tips	Active Spray, Plastic Primer, precision tips	Active Spray, Plastic Primer, precision tips	Active Spray, Plastic Primer, precision tips

(SF) Substrate failure

AF SERIES

INSTANT ADHESIVES

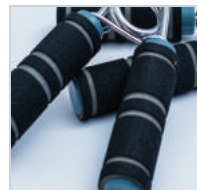
High quality instant adhesives for consumer and professional use.

A SOLUTION FOR EACH APPLICATION

AFINITICA has enlarged the range of viscosities available in our AF Series to offer a suitable solution for each application, considering the type of material, the adhesion strength, the shape of the parts to be bonded... A complete spectrum of products is now available with quality and performance guaranteed.

Due to the incorporation of the new formulae, the spectrum of products has been reorganized to meet the needs and references that are common for ethyl-based adhesives in traditional markets.

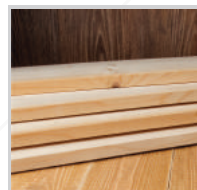
Choose the instant adhesive that best suits the application and be assured of the best result.



AF 02
Instant Adhesive
Low viscosity
Target materials:
plastic and rubber



AF 04
Instant Adhesive
Medium viscosity
Target materials:
general use



AF 06
Instant Adhesive
High viscosity
Target materials:
porous such wood,
cork, paper...



Low
viscosity



Medium
viscosity



High
viscosity

	AF 04	AF 200	AF 06	AF 405
BASE	Ethyl Cyanoacrylate	Ethyl Cyanoacrylate	Ethyl Cyanoacrylate	Ethyl Cyanoacrylate
VISCOSITY	Medium (90-140 cP)	Medium (230-350 cP)	High (900-1.300 cP)	High (2.600-3.500 cP)
COLOUR	Transparent	Transparent	Transparent	Transparent
FIXTURE TIME	5 seconds	5 seconds	5 seconds	5 seconds
FINAL STRENGTH (24 h)	Beech Wood 130-150 Kg/cm ² (SF) Mild Steel 120-160 Kg/cm ²	Beech Wood 150-170 Kg/cm ² (SF) Mild Steel 110-150 Kg/cm ²	Beech Wood 140-180 Kg/cm ² (SF) Mild Steel 140-170 Kg/cm ²	Beech Wood 160-170 Kg/cm ² (SF) Mild teel 130-180 Kg/cm ²
TEMPERATURE RANGE	-20°C - +80°C	-20°C - +80°C	-20°C - +80°C	-20°C - +80°C
AVAILABLE FORMATS	20 g, 50 g, 500 g, 20 kg	20 g, 50 g, 500 g, 20 kg	20 g, 50 g, 500 g, 20 kg	20 g, 50 g, 500 g, 20 kg
ACCESSORIES	Active Spray, Plastic Primer, precision tips	Active Spray, Plastic Primer, precision tips	Active Spray, Plastic Primer, precision tips	Active Spray, Plastic Primer, precision tips

(SF) Substrate failure

ZAPIT & RTA

ZAPIT: SPECIAL FORMULA FOR FOOTWARE AND LEATHER GOODS

RTA: SPECIAL FORMULA WITH RUBBER TOUGHENING



PROPERTIES

- Instant adhesion with extremely high bonding strength.
- Bond a large range of materials (except polyolefins).
- Transparents and easy to use.
- High peel strength.
- Bonds in 3 seconds (ZAPIT).
- Specially formulated for bonding leather (ZAPIT).
- Impact resistance (RTA).
- Flexible (RTA).

RTA

RTA includes rubber toughened particles which increase the viscosity and offer high peel strength, impacts and vibration resistance. An ideal adhesive for applications where a high resistance in a short time is required. RTA bonds all type of materials including metals, plastics and rubbers.



Flexible



Impact resistance



Bonds in 3 seconds

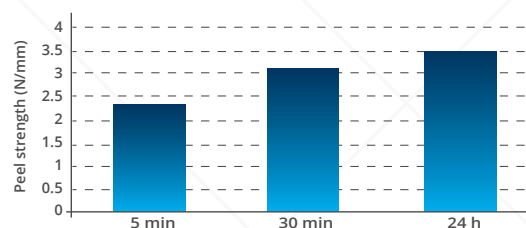


Special formula for leather

ZAPIT

ZAPIT offers the most convenient solution for footwear assembly and repair. This product increases manufacturing efficiency by saving time, offers quick and lasting solutions for all type of repairs and allows easy placement of logos and decals.

Initial Strength on Leather



	ZAPIT	RTA
BASE	Ethyl Cyanoacrylate	Ethyl Cyanoacrylate
VISCOSITY	Medium (275-350 cP)	High (1.000-3.000 cP)
COLOUR	Transparent	Transparent
FIXTURE TIME	3 seconds	5 seconds
FINAL STRENGTH (24 h)	Leather (Peel) 23-48 Kg/cm PVC (Shear) 160-180 Kg/cm ²	Polycarbonate 80-90 Kg/cm ² (SF) Mild Steel 140-170 Kg/cm ²
TEMPERATURE RANGE	-20 °C - +80 °C	-20 °C - +80 °C
AVAILABLE FORMATS	20 g, 50 g, 500 g, 20 kg	20 g, 50 g, 500 g, 20 kg
ACCESSORIES	Active Spray, Plastic Primer, precision tips	Active Spray, Plastic Primer, precision tips

(SF) Substrate failure

H₂R

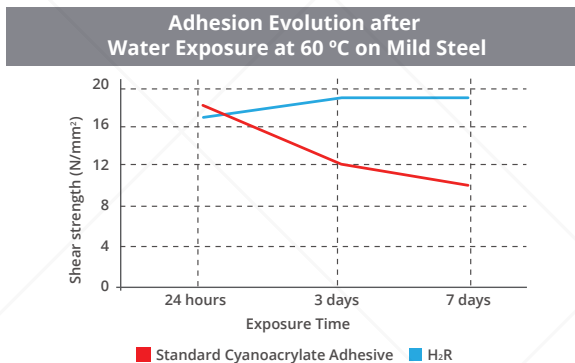
HIGH HUMIDITY RESISTANT ADHESIVE

Instant adhesive with high resistance to moisture exposure.



ASSURED ADHESION

Instant adhesive with high resistance to humidity exposure. As opposed to other adhesives, the strength of adhesion is constant at its maximum value even after 7 days of total submersion in water at 60 °C.



BASE	Ethyl Cyanoacrylate
VISCOSITY	Medium (150-250 cP)
COLOUR	Transparent
FIXTURE TIME	30 seconds
FINAL STRENGTH (24 h)	Mild Steel Grit-Blasted 150-200 Kg/cm ² Beech Wood 100-150 Kg/cm ² (SF)
TEMPERATURE RANGE	-20 °C - +80 °C
AVAILABLE FORMATS	20 g, 50 g, 500 g, 20 kg
ACCESSORIES	Active Spray, Plastic Primer, precision tips

(SF) Substrate failure

PROPERTIES

- Formulated with acrylates for long shelf life.
- Bonds in 30 seconds.
- High resistance to water and moisture exposure.
- Transparent.
- High adhesion strength.
- Bonds a large range of materials (except polyolefins).
- Easy to use.



Transparent



Water resistance



High strength



Multi-material



THE ODOURLESS TECHNOLOGY

Before developing our production method, there was only one single cyanoacrylate mass production process. This technology had not changed in 60 years and it was focused principally on production of a single monomer: Ethyl Cyanoacrylate (ECA), which is today almost a commodity.

We reject the idea that reactive monomers could only be made by first allowing them to polymerise during manufacture, and that the only way to recover monomer was to subsequently crack apart polymers with large inputs of expensive energy in a process that also created many residues. Such argument limits the scope of the type of monomers that could be realisable in a practical manner.

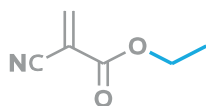
In AFINITICA, we are proud of having achieved the development of a new crackless production process patented for the cyanoacrylate manufacture. It was implemented in 2015 and allows us to obtain a large range of different types of cyanoacrylates with high performance and purity.

Due to these technological advances, AFINITICA is a pioneer in Methoxyethyl Cyanoacrylate (MECA) based adhesives, which is a non-irritant, odourless and non-staining monomer. Additionally, incorporation of new ways to balance reactivity and stability developed in 2016 enable us to offer unique products with long shelf life at a very competitive price.

Our products have the best quality that can be found in the market. We continue developing and innovating in all possible areas to improve this technology. Continuous improvement is our mantra.

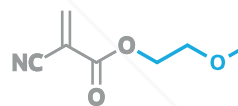
Ethyl Cyanoacrylate (ECA)

- | | |
|-------------------|-----------------|
| ✓ Instant | ✗ Irritant |
| ✓ Strong adhesion | ✗ Lachrymatory |
| ✓ Multi-material | ✗ Strong odour |
| ✓ Easy to use | ✗ Stain / Bloom |
| ✓ Transparent | ✗ Not flexible |



Methoxyethyl Cyanoacrylate (MECA)

- | | |
|-------------------|----------------------------|
| ✓ Instant | ✓ Non irritant |
| ✓ Strong adhesion | ✓ Non lachrymatory |
| ✓ Multi-material | ✓ Low / Zero odour |
| ✓ Easy to use | ✓ Does not stain / bloom |
| ✓ Transparent | ✓ More flexible than Ethyl |



BEMO SERIES

HIGH PERFORMANCE ODOURLESS INSTANT GEL ADHESIVES

The most advanced non-irritant and odourless instant adhesives for professional and home use.

METHOXYETHYL GELS

BEMO 2020



Instant adhesion



Transparent

BEMO 59



Repositionable



Transparent

BEMO 64+



Outdoor use



Patented

PROPERTIES

- High bonding strength.
- Flexible.
- Bond a large range of materials, including polystyrene (except polyolefins).
- Non irritant, non lachrymatory, label free.
- Low odour and low blooming.
- Impact resistance.
- Gel consistency suitable for applications in any orientation.
- Good peel strength.
- Allows repositioning of parts (BEMO 59).
- Water and high temperature resistance for outdoor use (BEMO 64+).
- Patented formula (BEMO 64+).
- Bonds in 5 seconds (BEMO 2020).



	BEMO 59	BEMO 64+	BEMO 2020
BASE	Methoxyethyl Cyanoacrylate	Methoxyethyl Cyanoacrylate	Methoxyethyl Cyanoacrylate
VISCOSITY	Gel (30.000-50.000 cP)	Gel (17.000-50.000 cP)	Gel (17.000-25.000 cP)
COLOUR	Transparent	Whitish	Transparent
FIXTURE TIME	60 seconds	30 seconds	5 seconds
FINAL STRENGTH (24 h)	Beech Wood 120-140 Kg/cm ² (SF) ABS 100-120 Kg/cm ² (FS)	Beech Wood 120-140 Kg/cm ² (SF) ABS 90-100 Kg/cm ² (FS)	Beech Wood 120-140 Kg/cm ² (SF) Mild Steel Grit-Blasted 60-100 Kg/cm ²
TEMPERATURE RANGE	-20°C - +80°C	-20°C - +150°C	-20°C - +80°C
AVAILABLE FORMATS	500 g, 20 kg, others to confirm	500 g, 20 kg, others to confirm	500 g, 20 kg, others to confirm
ACCESSORIES	Active Spray, Plastic Primer	Active Spray, Plastic Primer	Active Spray, Plastic Primer

(SF) Sustrate failure

BX & BXY SERIES

HIGH PERFORMANCE ODOURLESS INSTANT ADHESIVES

The most advanced non-irritant and odourless instant adhesives for professional and home use.



PROPERTIES

- Instant adhesion.
- High bonding strength.
- More flexibility than conventional instant adhesives.
- Non irritant, non lachrymatory, label free.
- Low odour and low blooming.
- Bonds a large range of materials, including polystyrene (except polyolefins).
- All products available with UV Tracer to allow in-line quality control.
- Transparent and easy to use.
- Different viscosities available (see table).
- BX03 certified by NFS. Others can be certified.
- The BXY Series could be certified under ISO10993 for medical devices use.

SPECIAL GRADE MONOMER

The BXY Series had been formulated with a special grade Methoxyethyl Cyanoacrylate which improves fixture time that now is only 3 seconds. It also increase the shelf life of the product.



Low odour & low blooming



NSF International



High strength



Bonds in 3 seconds



Non irritant Label free

	BX 01 / BXY 01	BX 03 / BXY 03	BX 05 / BXY 05
BASE	Methoxyethyl Cyanoacrylate	Methoxyethyl Cyanoacrylate	Methoxyethyl Cyanoacrylate
VISCOSITY	BX01: Low (40-80 cP) BXY01: Low (40-80 cP)	BX03: Medium (125-250 cP) BXY03: Medium (120-170 cP)	BX05: High (1.100-1.750 cP) BXY05: High (700-1.000 cP)
COLOUR	Transparent	Transparent	Transparent
FIXTURE TIME	BX01: 10 seconds BXY01: 3 seconds	BX03: 10 seconds BXY03: 3 seconds	BX05: 15 seconds BXY05: 3 seconds
FINAL STRENGTH (24 h)	Beech Wood BX01: 70-110 Kg/cm ² (SF) BXY01: 80-100 Kg/cm ² (SF) Mild Steel BX01: 120-150 Kg/cm ² BXY01: 90-140 kg/cm ²	Beech Wood BX03: 90-160 Kg/cm ² (SF) BXY03: 120-140 Kg/cm ² (SF) Mild Steel BX03: 100-200 Kg/cm ² BXY03: 80-130 Kg/cm ²	Beech Wood BX05: 110-140 Kg/cm ² (SF) BXY05: 130-150 Kg/cm ² (SF) Mild Steel BX05: 70-120 Kg/cm ² BXY05: 100-140 Kg/cm ²
TEMPERATURE RANGE	-20°C - +80°C	-20°C - +80°C	-20°C - +80°C
AVAILABLE FORMATS	20 g, 50 g, 500 g, 20 kg	20 g, 50 g, 500 g, 20 kg	20 g, 50 g, 500 g, 20 kg
ACCESSORIES	Active Spray, Plastic Primer, precision tips	Active Spray, Plastic Primer, precision tips	Active Spray, Plastic Primer, precision tips

(SF) Substrate failure

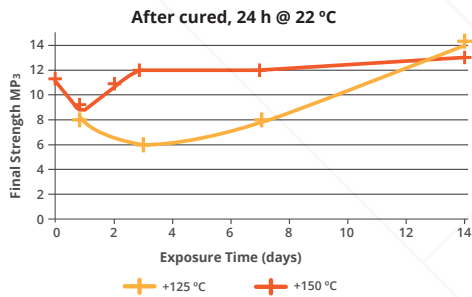
FURY

HIGH TEMPERATURE RESISTANT ADHESIVE
Specially formulated to resist exposures up to +175 °C.

THE MAXIMUM PERFORMANCE

Fury is the first odourless cyanoacrylate capable of withstanding temperatures up to +150 °C constantly with prolonged exposure while maintaining its performance and adhesion strength. Moreover, it can withstand temperatures excursions up to +175 °C, making it a truly thermally resistant adhesive.

Fury's Adhesion Evolution after
Exposure to High Temperatures on Mild Steel



PROPERTIES

- Formulated with acrylates for long shelf life.
- Bonds in 10 seconds.
- Withstands exposure to high temperatures (up to +175 °C).
- More flexibility than conventional instant adhesives.
- Low odour and low blooming.
- Bonds a large range of materials (except polyolefins).



High temperature resistant



High strength



Low odour



Multi-material



BASE	Methoxyethyl Cyanoacrylate
VISCOSITY	Medium (280-400 cP)
COLOUR	Transparent
FIXTURE TIME	10 seconds
FINAL STRENGTH (24 h)	Mild Steel 100-190 Kg/cm ² Beech Wood 70-90 Kg/cm ²
TEMPERATURE RANGE	-20 °C - +150 °C
AVAILABLE FORMATS	20 g, 50 g, 500 g, 20 kg
ACCESSORIES	Plastic Primer, precision tips



3D Fix

IMPREGNATING ADHESIVE FOR 3D PRINTING PARTS

A single product to offer the best service for 3D printing.



PROPERTIES

- High primer capacity.
- Increases resistance and durability of parts.
- Can be used as a coating.
- Non irritant, non lachrymatory, label free.
- Low odour and low blooming.
- Revives colours.
- Glossy finish.
- Drying in 24 h.
- Transparent and easy to use.



Increase strength



Non irritant
Label free



Coat and protect



Low odour
& blooming

ALL IN ONE

3D Fix is a cyanoacrylate adhesive designed specifically for impregnating, priming and hardening of 3D printed gypsum parts. Due to its high priming depth, it impregnates the piece from the inside increasing its resistance and durability.

The colours are visibly more intense and vibrant. It can also be used as a coating to provide extra gloss.



BASE	Methoxyethyl Cyanoacrylate
VISCOSITY	Low (4-7 cP)
COLOUR	Transparent
DRY TIME	24 hours
TEMPERATURE RANGE	-20°C - +80°C
AVAILABLE FORMATS	500 g, 1 Kg, 20 Kg
ACCESSORIES	Active Spray

THE 2-COMPONENT (2K) TECHNOLOGY

AFINITICA's 2-component (2K) cyanoacrylates (CAs) deliver performance, precision and safety on every kind of applications.

The syringe, plunger and built-in mixer-dispenser package for cyanoacrylates provides an accurate delivery of a reactive messy product in any orientation. Additionally, it provides a cost-effective and efficient use of the viscous product, resulting in:

- No waste due to product overrun in the standard tubes.
- Full use of product and reliable re-usability due to clean and isolated stoppering.
- Easy and safely disposed of solidified product in mixer when finished.

The mixing of both components enables cyanoacrylates to overcome gap filling shortfalls and broaden application scope, as well as modifying the limited property of 1-component (1K). Due to the dual chamber format of the packaging, both parts remain isolated, while the product is uniformly mixed at point of dispensing. That allows use of formulation components that are incompatible in 1-component adhesives and thus enables customisation of factors according to application.

Adhesive Welding
Gap Cure



Adhesive Welding Metal
Targeted Substrate Performance



Super Flex
Flexible and Elastic



Adhesive Welding Ultra
Instant Gap Cure



Adhesive Welding Metal+
Instant Targeted Substrate Performance



Super Repair
Repairs and Bonds



ADHESIVE WELDING ADHESIVE WELDING ULTRA

GAP FILLING INSTANT ADHESIVES

The perfect combination between an epoxy and a superglue.



PROPERTIES

- High bonding strength.
- Bonds in 10 seconds at zero gap.
- Fills gaps up to 5 mm.
- Active on part for up to 5 (Adhesive Welding Ultra) or 30 (Adhesive Welding) minutes.
- Bonds a large range of materials (except polyolefins).
- Transparent.
- Precision dispensing.
- Reclosable and reusable full content.
- Suitable for applications in any orientation.



Gap filling



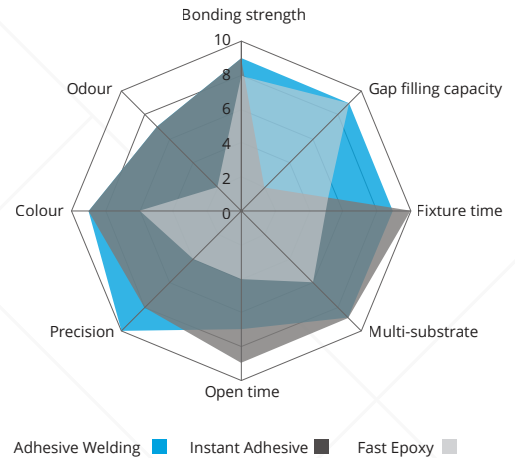
multi-substrate



High strength



Accuracy



ADHESIVE WELDING ULTRA

Adhesive Welding Ultra combines all the properties of Adhesive Welding but is differentiated by shorter working and open times for applications requiring fast fixturing and fast assembly.

	ADHESIVE WELDING	ADHESIVE WELDING ULTRA
BASE	Ethyl Cyanoacrylate	Ethyl Cyanoacrylate
VISCOSITY	Thixotropic Gel	Thixotropic Gel
COLOUR	Transparent	Transparent
FIXTURE TIME	10 seconds	10 seconds
FINAL STRENGTH (24 h)	Beech Wood 60-140 Kg/cm ² (SF) Mild Steel 140-180 Kg/cm ²	Beech Wood 140-160 Kg/cm ² (SF) Mild Steel 120-140 Kg/cm ²
OPEN TIME	20-30 minutes	5-6 minutes
GAP FILLING CAPACITY	5 mm	5 mm
TEMPERATURE RANGE	-20°C - +120°C	-20°C - +120°C
AVAILABLE FORMATS	10 g, 50 g, 200 g, 400 g	10 g, 50 g, 200 g, 400 g
ACCESSORIES	Active Spray, Plastic Primer, dispensers, mixers	Active Spray, Plastic Primer, dispensers, mixers

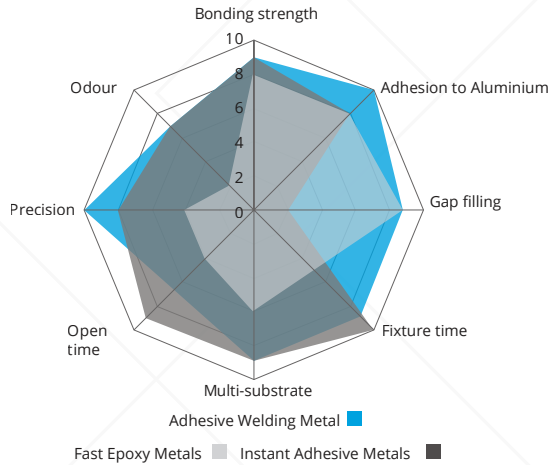
(SF) Substrate failure

ADHESIVE WELDING METAL

ADHESIVE WELDING METAL+

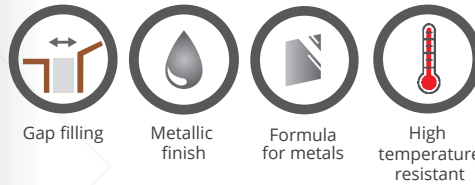
INSTANT ADHESIVES WITH GAP FILLING CAPACITY AND EXCELLENT ADHESION TO METALS

The definite solution to work with metals or under high temperatures exposures.



PROPERTIES

- High bonding strength.
- Bonds in 10-15 seconds at zero gap.
- Fills gaps up to 5 mm.
- High adhesion to metals, specially aluminium.
- Bonds a large range of materials (except polyolefins).
- Transparent or grey.
- Precision dispensing.
- Reclosable and reusable full content.
- Suitable for applications in any orientation.
- High temperature resistance.



ADHESIVE WELDING METAL+

Adhesive Welding Metal+ adds high temperature resistance to the excellent adhesion to metals of Adhesive Welding Metal. It allows a wide variety of applications in machinery, engines and other industrial applications. It is also formulated with acrylates to increase durability.

	ADHESIVE WELDING METAL	ADHESIVE WELDING METAL+
BASE	Ethyl Cyanoacrylate	Ethyl Cyanoacrylate
VISCOSITY	Thixotropic Gel	Thixotropic Gel
COLOUR	Grey / Transparent	Grey
FIXTURE TIME	15 seconds	10 seconds
FINAL STRENGTH (24 h)	Aluminium A6082 150-220 Kg/cm ² Mild Steel 150-210 Kg/cm ²	Aluminium A6082 210-230 Kg/cm ² Mild Steel 120-150 Kg/cm ²
OPEN TIME	35-40 minutes	5-6 minutes
GAP FILLING CAPACITY	5 mm	5 mm
TEMPERATURE RANGE	-20°C - +120°C	-20°C - +150°C
AVAILABLE FORMATS	10 g, 50 g, 200 g, 400 g	10 g, 50 g, 200 g, 400 g
ACCESSORIES	Active Spray, Plastic Primer, dispensers, mixers	Active Spray, Plastic Primer, dispensers, mixers

(SF) Substrate failure



SUPER REPAIR

IMPACT RESISTANT ADHESIVE WITH GAP FILLING CAPACITY

The only adhesive capable of bonding and repairing in minutes. Machinable, paintable and impact resistant.



PROPERTIES

- Hardens in 5-10 minutes.
- Instant adhesion and high bonding strength.
- Fills gaps of any volume.
- Bonds a large range of materials (except polyolefins).
- May be drilled, tapped, sanded, filed once hardened.
- Paintable.
- Impact resistant.
- Low volume shrinkage.
- Gel consistency suitable for application in any orientation.



Hardens in 5 minutes



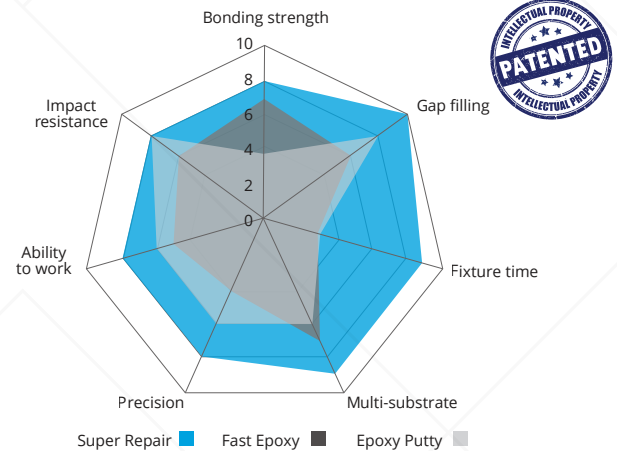
Fills gaps of any volume



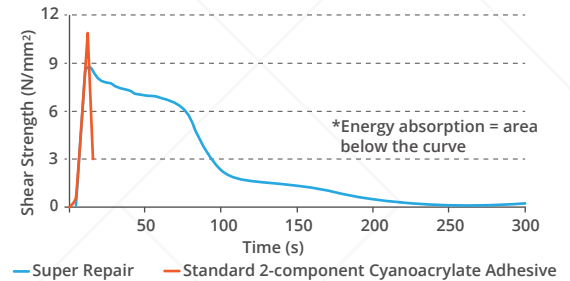
Machinable



Impact resistance



Toughness (Mild Steel Grit-Blasted, gap 2 mm, 24 h)



BASE	Ethyl Cyanoacrylate
VISCOSITY	Thixotropic Gel
COLOUR	Whitish
FIXTURE TIME	15 seconds
FINAL STRENGTH (24 h)	Mild Steel 100-120 Kg/cm ² Beech Wood 140-150 Kg/cm ² (SF)
GAP FILLING CAPACITY	unlimited
TEMPERATURE RANGE	-20 °C - +80 °C
AVAILABLE FORMATS	10 g, 50 g, 200 g, 400 g
ACCESSORIES	Active Spray, Plastic Primer, dispensers, mixers

(SF) Substrate failure

SUPER FLEX

FLEXO-ELASTIC INSTANT ADHESIVE WITH GAP FILLING CAPACITY

The first sealant and elastic instant cyanoacrylate. Maximum flexibility and resistance in one single product.

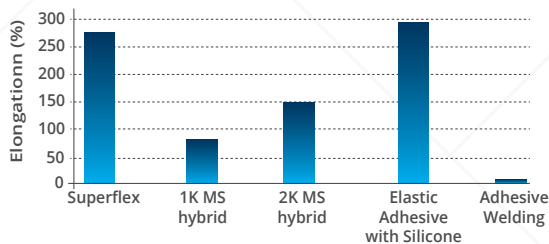
FIRST FLEXIBLE & ELASTIC 2K CYANOACRYLATE

The only elastic and bulk-curing 2K cyanoacrylate in the market. Due to its formulation based on a low volatility monomer, it is a non-irritant, odourless and non-staining adhesive. It offers an elongation > 200 % with a high bonding strength. Super Flex is ideal for repairing parts that flex or move relative to each other or vibrate.



NSF International

Elongation



BASE	Mehtoxyethyl Cyanoacrylate
VISCOSITY	Thixotropic Gel
COLOUR	Transparent
FIXTURE TIME	60 seconds
FINAL STRENGTH (24 h)	Mild Steel 40-50 Kg/cm ² ABS 60-80 Kg/cm ² (SF)
GAP FILLING CAPACITY	1 cm
TEMPERATURE RANGE	-20 °C - +80 °C
AVAILABLE FORMATS	10 g, 50 g, 200 g, 400 g
ACCESSORIES	Active Spray, Plastic Primer, dispensers, mixers

(SF) Substrate failure

PROPERTIES

- Bonds in 60 seconds.
- Cures in 6-10 minutes.
- Instant adhesion and high peel strength.
- Elongation > 200 %.
- Non lachrymatory, non irritant, label free.
- Absorbs impacts and vibrations.
- Odourless and low blooming.
- Bonds a large range of materials, specially vitrified surfaces (ceramic, glass), except polyolefins.
- Gel consistency suitable for applications in any orientation.
- Certified by NSF.



Flexible and elastic



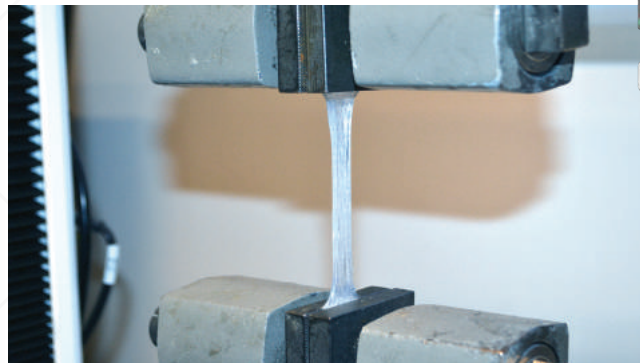
Gap filling



Non irritant Label free



Impact and vibration absorbing



THE LIGHT CURING TECHNOLOGY

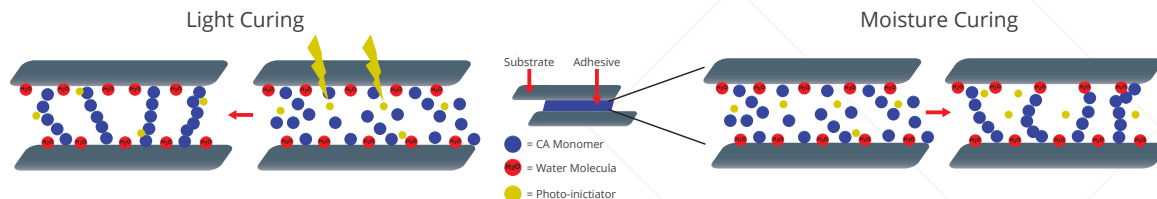


The UV technology is the next big step in the adhesive industry. AFINITICA has developed a process that combines light curing and moisture curing into a single product, working as a dual cure mechanism. This technology has been implemented in Light lock n°1 and is patented, as the first visible light curing Methoxyethyl Cyanoacrylate (MECA) in the market.

When Light lock n°1 is applied between substrates, surface initiated cure begins instantly. In the surface, the bound water activates the adhesive, which polymerizes, bonding the two surfaces. The same chemical process occurs when curing begins through the photo-initiator, once the adhesive is activated by the light, initiation of polymerisation ensues.

The light curing technology offers unique advantages in industrial processes and cost reduction. Ultra-fast cure allows shorter production cycle times, in-line quality control and less work-in-process (WIP) inventory. Moreover, the 1-component system is solvent free, odourless, has zero blooming, requires no mixing and works with precise automated dispensing.

Dual initiation mechanism guarantees the maximum degree of cure in the minimum time in any situation including shadow cure, surface cure, deep cure and cure of excess adhesive fillets. The product can also be used atop or beside single substrates so enabling joint reinforcement and/or sealing.



LIGHT LOCK N° 1

ODOURLESS LIGHT CURING INSTANT ADHESIVE

The first odourless light curing cyanoacrylate. A unique product in the market.

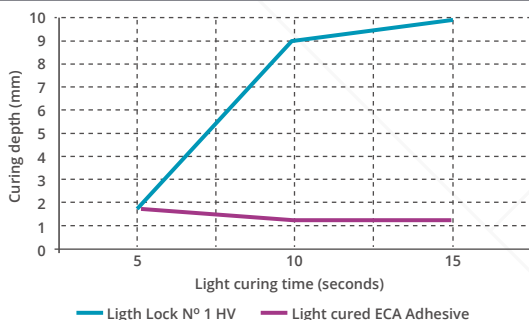
WORLD FIRST

The proprietary formulation exploits a novel photo-initiator system that is highly sensitivity to visible and UV light. Light lock n°1 additionally functions as an odourless instant adhesive offering high bonding strength on a plethora of substrates.



NSF International

Curing Depth with Light



PROPERTIES

- Dual cure system: moisture (shadow cure) and photo-cure.
- High photosensitivity to visible and UV light
- Room temperature storage stability.
- Dry to touch, tack free cure.
- Cure-on-demand of excess material exuded from bondlines.
- Bonds, fills and reconstructs.
- Can be used as a coating.
- Odourless, zero blooming.
- Non irritant, label free.
- Available in different viscosities.
- Certified by NSF.
- All products available with UV Tracer to allow in-line quality control.



Light & shadow cure



Gap filling



Zero blooming



Non irritant Label free



	Light Lock N° 1 LV	Light Lock N° 1 MV	Light Lock N° 1 HV	Light Lock N° 1 Gel
BASE	Methoxyethyl Cyanoacrylate	Methoxyethyl Cyanoacrylate	Methoxyethyl Cyanoacrylate	Methoxyethyl Cyanoacrylate
VISCOSITY	Low (10-30 cP)	Medium (180-220 cP)	High (600-1200 cP)	Gel (40.000-50.000 cP)
COLOUR	Cures transparent	Cures transparent	Cures transparent	Cures transparent
FIXTURE TIME UNDER LIGHT	5 seconds	5 seconds	5 seconds	15 seconds
FINAL STRENGTH (24 h)	ABS 120-130 Kg/cm ² (SF) PVC 60-70 Kg/cm ² (SF)	ABS 120-130 Kg/cm ² (SF) PVC 120-130 Kg/cm ² (SF)	ABS 120-130 Kg/cm ² (SF) PVC 110-130 Kg/cm ² (SF)	ABS 129-133 Kg/cm ² (SF) PVC 121-137 Kg/cm ² (SF)
TEMPERATURE RANGE	-20 °C - +80 °C	-20 °C - +80 °C	-20 °C - +80 °C	-20 °C - +80 °C
AVAILABLE FORMATS	20 g, 500 g	20 g, 500 g	20 g, 500 g	to be confirmed
ACCESSORIES	Active Spray, Plastic Primer, precision tips	Active Spray, Plastic Primer, precision tips	Active Spray, Plastic Primer, precision tips	Active Spray, Plastic Primer

(SF) Substrate failure

ACCESSORIES

ACTIVE SPRAY 150ml

Activator spray for instant adhesives

PROPERTIES

- Increases curing speed of cyanoacrylate adhesives on acidic woods and porous substrates.
- Dries in seconds.
- Open time up to 24 hours.
- Non toxic.
- Transparent and non yellowing.
- Easy to use.
- Available in sachets.



PLASTIC PRIMER 30ml

Polyolefin primer for instant adhesives

PROPERTIES

- Improves adhesion to difficult to bond substrates.
- Specially formulated for adhesion in polyolefins (PE, PP, Teflon...).
- Suitable for use with other cyanoacrylates.
- Dries in seconds.
- Increases adhesion strength.



DISPENSERS AND MIXERS

For 10 g, 50 g, 200 g and 400 g syringes.



SUMMARY

	ADHESIVE WELDING	ADHESIVE WELDING METAL	SUPER REPAIR	SUPER FLEX	ADHESIVE WELDING ULTRA	ADHESIVE WELDING METAL +
BASE	Ethyl	Ethyl	Ethyl	Methoxyethyl	Ethyl	Ethyl
VISCOSITY	Thixotropic Gel	Thixotropic Gel	Thixotropic Gel	Thixotropic Gel	Thixotropic Gel	Thixotropic Gel
COLOUR	Transparent	Grey / Transparent	Whitish	Transparent	Transparent	Grey
FIXTURE TIME	10 seconds	15 seconds	15 seconds	60 seconds	10 seconds	10 seconds
FINAL STRENGTH (24 h)	Mild Steel Grit-Blasted 190-230 Kg/cm ² Beech Wood 110-160 Kg/cm ² (SF)	Mild Steel Grit-Blasted 200-240 Kg/cm ² Aluminium A6082 150-220 Kg/cm ²	Mild Steel Grit-Blasted 190-230 Kg/cm ² Beech Wood 110-160 Kg/cm ² (SF)	Mild Steel Grit-Blasted 60-90 Kg/cm ² ABS 55-70 Kg/cm ²	Mild Steel 120-140 Kg/cm ² Beech Wood 140-160 Kg/cm ² (SF)	Mild Steel 120-150 Kg/cm ² Aluminium A6082 210-230 Kg/cm ²
TEMPERATURE RANGE	-20 °C - +120 °C	-20 °C - +120 °C	-20 °C - +80 °C	-20 °C - +80 °C	-20 °C - +120 °C	-20 °C - +150 °C
GAP FILLING	5 mm	5 mm	unlimited	1 cm	5 mm	5 mm
OPEN TIME	20-30 min	35-40 min	4-10 min	6-10 min	5-6 min	5-6 min
GENERAL DESCRIPTION	<p>Instant adhesives with gap filling capability on multi-substrates excluding polyolefins.</p> <p>The two-component system allows the gap filling and the gel consistency enables applications in any orientation.</p> <p>Its ergonomically designed syringe with the static mixer assures a uniformity and high precision application, which is made in a very clean and easy way.</p>					
SPECIFIC PROPERTIES	<ul style="list-style-type: none"> • Long open and working time 	<ul style="list-style-type: none"> • Excellent adhesion to metals, specially aluminium • Long open and working time 	<ul style="list-style-type: none"> • Bonds, repairs and reconstructs • Can be machined once hardened after 5-10 min • Impact resistant • Minimum volume shrinkage • Patented 	<ul style="list-style-type: none"> • Flexible and elastic (elongation >200%) • Impact and vibration resistance • Non irritant • Low odour • Low blooming • Patented 	<ul style="list-style-type: none"> • Instant adhesion • Short open time • Multi-substrate • Transparent • Short open time 	<ul style="list-style-type: none"> • Instant adhesion • Excellent adhesion on metals • High temperature resistant • Short open time
AVAILABLE FORMATS	10 g, 50 g, 200 g, 400 g	10 g, 50 g, 200 g, 400 g	10 g, 50 g, 200 g, 400 g	10 g, 50 g, 200 g, 400 g	10 g, 50 g, 200 g, 400 g	10 g, 50 g, 200 g, 400 g

(SF) Substrate failure

SUMMARY

	RAPID ASSEMBLY	BEMO 2020	BEMO 64+	BEMO 59	BX SERIES	BXY SERIES
BASE	Ethyl	Methoxyethyl	Methoxyethyl	Methoxyethyl	Methoxyethyl	Methoxyethyl
VISCOSITY	Thixotropic Gel	Thixotropic Gel	Thixotropic Gel	Thixotropic Gel	BX01: 40-60 cP BX03: 120-250 cP BX05: 1200-1500 cP	BXY01: 40-80 cP BXY03: 120-170 cP BXY05: 700-1000 cP
COLOUR	Transparent	Transparent	Transparent	Transparent	Transparent	Transparent
FIXTURE TIME	30 seconds	5 seconds	30 seconds	60 seconds	10-15 seconds	3 seconds
FINAL STRENGTH (Kg/cm², 24 h)	Mild Steel 100-120 Beech Wood 100-120 (SF)	Beech Wood 120-140 (SF) Mild Steel Grit-Blasted 160-180	Beech Wood 120-140 (SF) Mild Steel 170-220	Beech Wood 120-140 (SF) Mild Steel 160-190	Beech Wood BX01: 90-110 (SF) BX03: 130-170 (SF) BX05: 120-160 (SF)	Beech Wood BXY01: 80-100 (SF) BXY03: 120-140 (SF) BXY05: 130-150 (SF)
TEMPERATURE RANGE	-20 °C - +80 °C	-20 °C - +80 °C	-20 °C - +150 °C	-20 °C - +80 °C	-20 °C - +80 °C	-20 °C - +80 °C
GAP FILLING	≅ 0,25 mm	≅ 0,25 mm	≅ 0,25 mm	≅ 0,25 mm	≅ 0,10-0,20 mm	≅ 0,10-0,20 mm
OPEN TIME	2 hours	2 hours	2 hours	2 hours	Up to 2 hours depending on viscosity and substrate.	Up to 2 hours depending on viscosity and substrate.
GENERAL DESCRIPTION	Assembly adhesive with fast adhesion, and repositionable during 2 minutes.	The fastest non irritant low odour instant adhesive suitable for working in any orientation.	Moisture and high temperature resistant, non irritant, low odour adhesive for outdoor use.	Flexible non irritant adhesive with good peel strength resistance.	Non irritant instant adhesives for general use.	High performance non irritant instant adhesives for general use.
SPECIFIC PROPERTIES	<ul style="list-style-type: none"> • Repositionable • Suitable for porous and non-porous substrates (except polyolefins) • Gel consistency 	<ul style="list-style-type: none"> • Instant adhesion • Non irritant • Low odour and low blooming • Flexible • Gel consistency • High stability 	<ul style="list-style-type: none"> • Moisture and high temperature resistant • Non irritant • Low odour and low blooming • Flexible • Gel consistency 	<ul style="list-style-type: none"> • Non irritant • Low odour and low blooming • Peel resistance • Flexible • Repositionable • Gel consistency 	<ul style="list-style-type: none"> • Non irritant • Low odour and low blooming • Adhesion to polystyrene • Remarkable flexibility 	<ul style="list-style-type: none"> • Non irritant • Low odour and low blooming • Adhesion to polystyrene • Remarkable flexibility • Instant adhesion
AVAILABLE FORMATS	15 g, 30-100 g, 500 g, 20 kg	500 g, 20 kg, others to confirm	500 g, 20 kg, others to confirm	500 g, 20 kg, others to confirm	20 g, 50 g, 500 g, 20 kg	20 g, 50 g, 500 g, 20 kg

(SF) Substrate failure

SUMMARY

	AF SERIES	ZAPIT	RTA	H ₂ R	FURY	LIGHT LOCK No. 1	3D FIX
BASE	Ethyl	Ethyl	Ethyl	Ethyl	Methoxyethyl	Methoxyethyl	Methoxyethyl
VISCOSITY (cP)	AF00: 1,8-5 AF02: 8-25 AF111: 25-45 AF150: 60-100 AF04: 90-140 AF200: 230-350 AF06: 1.050-1.500 AF405: 2.600-3.500	250-400	1.000-3.000	150-250	280-400	LV: 10-30 MV: 180-220 HV: 600-1.200 Gel: 40.000-50.000	4-7
COLOUR	Transparent	Transparent	Transparent	Transparent	Transparent	Transparent	Transparent
FIXTURE TIME	5 seconds	3 seconds	5 seconds	30 seconds	10 seconds	5 seconds (light cure)	24 hours (dry)
FINAL STRENGTH (Kg/cm ² , 24 h)	Mild Steel AF00: 170-200 AF02: 170-200 AF111: 150-160 AF150: 110-140 AF04: 120-160 AF200: 110-150 AF06: 170-200 AF405: 130-180	PVC 160-180 Leather (Peel) 23-48 Kg/cm	Polycarbonate 80-90 Mild Steel 140-170	Mild Steel Grit-Blasted 150-200 Beech Wood 100-150 (SF)	Mild Steel 90-130 Beech Wood 60-100	ABS LV: 115-130 (SF) MV: 115-130 (SF) HV: 115-130 (SF) Gel: 129-133 (SF)	Do not apply
TEMP. RANGE	-20 °C - +80 °C	-20 °C - +80 °C	-20 °C - +80 °C	-20 °C - +80 °C	-20 °C - +150 °C	-20 °C - +80 °C	-20 °C - +80 °C
GAP FILLING	≅ 0,10-0,20 mm	≅ 0,15 mm	≅ 0,20 mm	≅ 0,10 mm	≅ 0,15 mm	centimetres	Do not apply
OPEN TIME	Up to 2 h depending on viscosity and substrate.	Up to 2 h depending on substrate.	Up to 2 h depending on substrate.	Up to 2 h depending on substrate.	Up to 2 h depending on substrate.	Up to 30 minutes without light exposure.	Do not apply
GENERAL DESCRIPTION	High performance instant adhesives for general use.	Instant adhesive designed for bonding leather.	Instant adhesive with rubber toughened particles.	Instant adhesive with high resistance to humidity and hot water (+60 °C).	First odourless instant adhesive with high temperature resistance +150 °C.	First odourless UV and visible light curing instant cyanoacrylate.	Strengthening cyanoacrylate primer for 3D printing parts.
SPECIFIC PROPERTIES	<ul style="list-style-type: none"> • Instant adhesion • High bonding strength • Multi-substrate 	<ul style="list-style-type: none"> • Bonds in 3 seconds • Special formula to bond leather • High peel strength • Multi-substrate 	<ul style="list-style-type: none"> • Bonds in 5 seconds • Impact resistant • High peel strength • Multi-substrate 	<ul style="list-style-type: none"> • Humidity and water resistant • High bonding strength • Multi-substrate 	<ul style="list-style-type: none"> • High temperature resistant • Low odour and low blooming • High bonding strength • Multi-substrate 	<ul style="list-style-type: none"> • Dual system: light and shadow cure • High photo-sensitivity • Dry to touch • Non irritant • Low odour and zero blooming 	<ul style="list-style-type: none"> • High primer capacity • Non irritant • Dries in 24 h • Gloss finish • Transparent
AVAILABLE FORMATS	20 g, 50 g, 500 g, 20 kg	20 g, 50 g, 500 g, 20 kg	20 g, 50 g, 500 g, 20 kg	20 g, 50 g, 500 g, 20 kg	20 g, 50 g, 500 g, 20 kg	20 g, 500 g	500 g, 1 kg, 20 kg

(SF) Substrate failure



MONOMERS

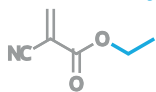
AFINITICA SPECIALTY MONOMERS

Our specialty monomers are synthesized through a new-to-the-world innovative industrial method owned by AFINITICA. It was developed to overcome the limitation of the current manufacturing methodology for cyanoacrylates.

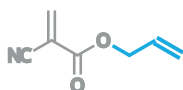
This allows us to offer the widest variety of cyanoacrylate monomers, at purity levels always above 99 % for all our liquid cyanoacrylates, in the range of 98 % purity for our solid monomers and bis-cyanoacrylates, and even medical grade monomers with a 99.5+ % of purity.



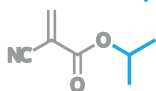
APT-101 Ethyl Cyanoacrylate



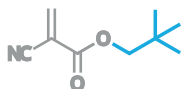
AF570 Allyl Cyanoacrylate



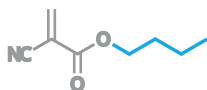
APT-104 Isopropyl Cyanoacrylate



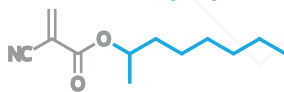
AF540 Neopentyl Cyanoacrylate



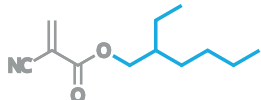
APT-103 n-Butyl Cyanoacrylate



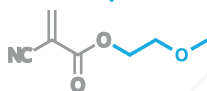
APT-105 2-Octyl Cyanoacrylate



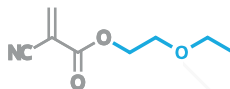
APT-304 2-Ethylhexyl Cyanoacrylate



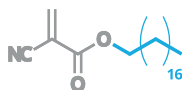
APT-102 β-Methoxyethyl Cyanoacrylate



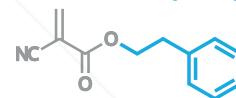
AF880 β-Ethoxyethyl Cyanoacrylate



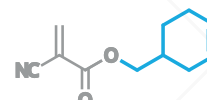
APT-305 Octadecyl Cyanoacrylate



APT-307 Phenylethyl Cyanoacrylate



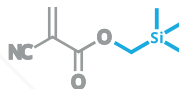
APT-306 3-Cyclohexenyl Cyanoacrylate



APT-303 Tetrahydrofurfuryl Cyanoacrylate



AF560 Trimethylsilyl Cyanoacrylate



APT-301 1,6-Hexanediol bis-Cyanoacrylate







AFINITICA TECHNOLOGIES S.L.

Edificio Eureka, Campus UAB

08193 Bellaterra. Barcelona (Spain)

+34 931 431 952

info@afinitica.com

www.afinitica.com



FS 629494